

INTERNO



*IN CONTINUA EVOLUZIONE
THE EVOLUTION CONTINUES*

ABK

EMOZIONI IN SUPERFICIE

INTERNO **9**

*IN CONTINUA EVOLUZIONE
THE EVOLUTION CONTINUES*

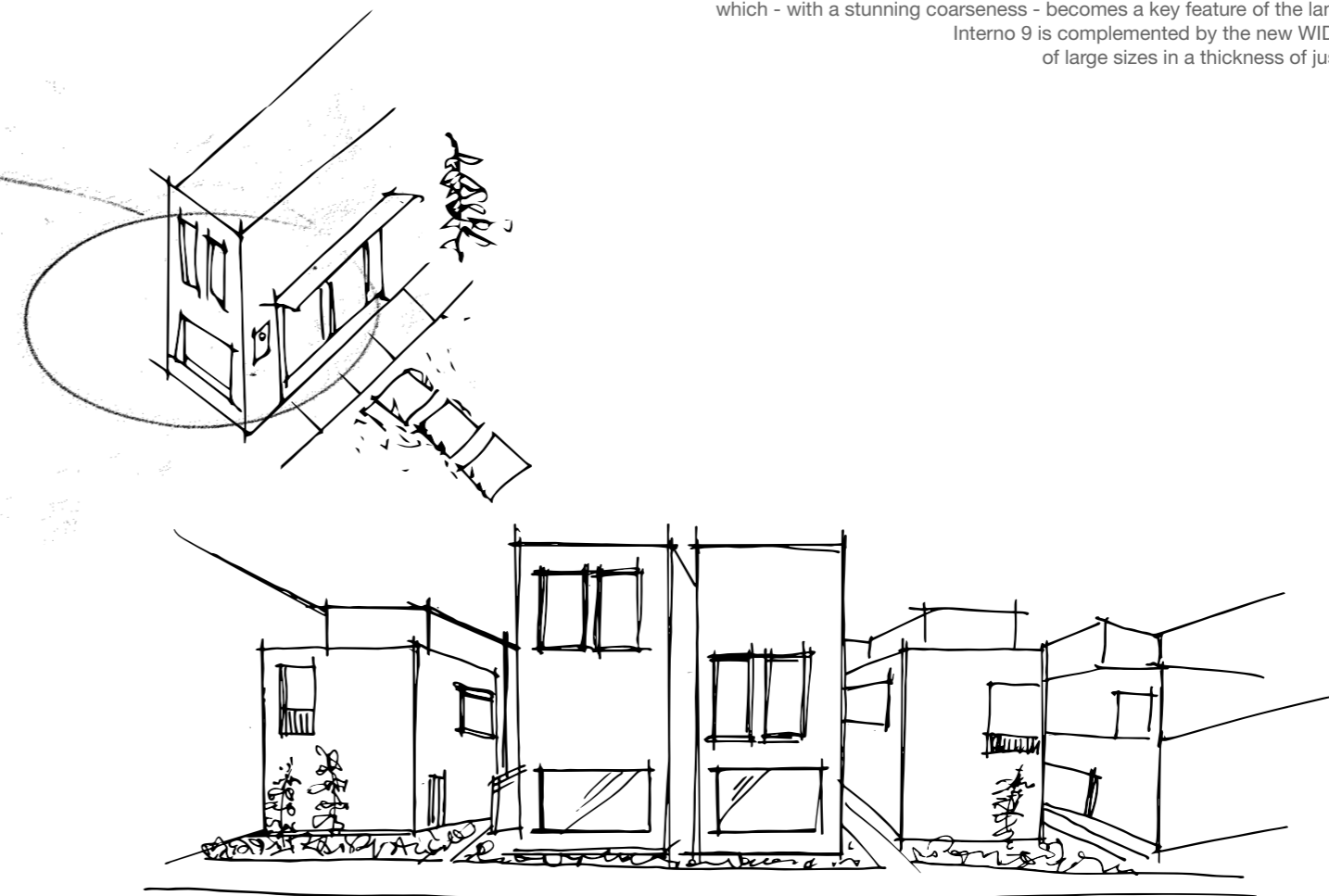
ABK
EMOZIONI IN SUPERFICIE



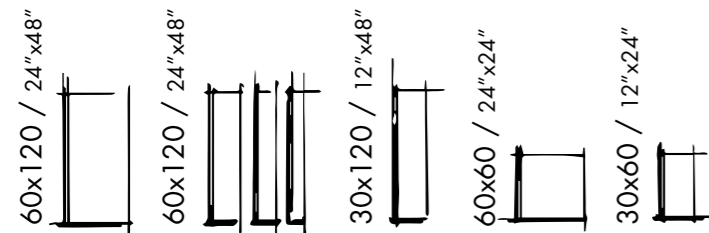
INTERNO 9

Immagina un complesso architettonico con uno stile moderno, minimalista, dove lo sguardo incontra strutture lineari, armonie di volumi, contrasti materici, anche su grandi superfici. L'eleganza della semplicità si amalgama all'irriverenza indomita del metallo che, con affascinante rudezza, si fa protagonista del paesaggio. Interno 9 si completa con WIDE, il nuovo programma di grandi formati in soli 7 mm di spessore.

Imagine a contemporary residential complex with a minimalist feel, where the viewer's gaze is drawn to linear structures, harmonious forms, and contrasting textures. Stylish simplicity is paired with the untamed irreverence of weathering steel, which - with a stunning coarseness - becomes a key feature of the landscape. Interno 9 is complemented by the new WIDE series of large sizes in a thickness of just 7 mm.



INTERNO 9

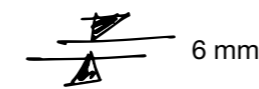
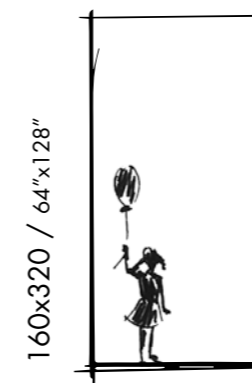


dark rust mud silver dune pearl

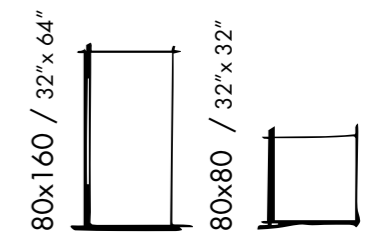
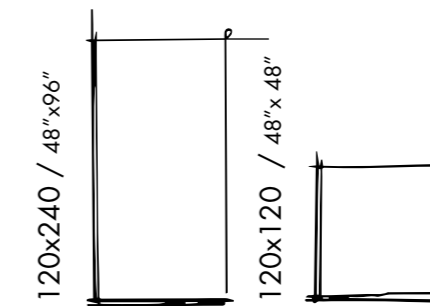


Wide è il nuovo programma di lastre ceramiche a 6 e 7 mm di spessore prodotte da ABK con tecnologia CONTINUA+.
Lo spessore ridotto e le grandi dimensioni permettono il rivestimento di ampi spazi residenziali e commerciali, compresi i volumi architettonici creati per la personalizzazione e le esigenze specifiche dei vari ambienti.

Wide is ABK's new collection of 6 and 7 mm thick ceramic slabs produced using CONTINUA+ technology.
Thanks to their small thickness and large size, these slabs are ideal for use in large residential and commercial spaces, including architectural volumes designed for custom applications.



dark rust silver pearl



INTERNO 9

Fusion

METAL
STONE
MARBLE
WOOD

Attraverso le molteplici ispirazioni offerte dalla gamma ABK, è possibile personalizzare ogni ambiente donandogli una sensazione materica sempre differente. Metallo, pietra, marmo e legno si combinano sapientemente tra loro, dando vita a sorprendenti contaminazioni stilistiche per architetture estremamente contemporanee.

The many inspirations behind the ABK range can be used to customise any space and create constantly changing material effects. Metal, stone, marble and wood are skilfully combined to create a surprising crossover style ideal for highly contemporary architectural solutions.

METAL
+
STONE

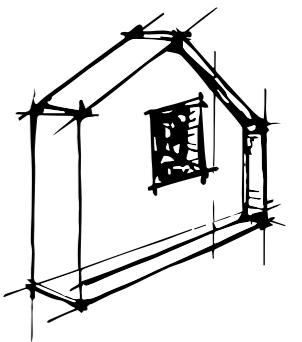
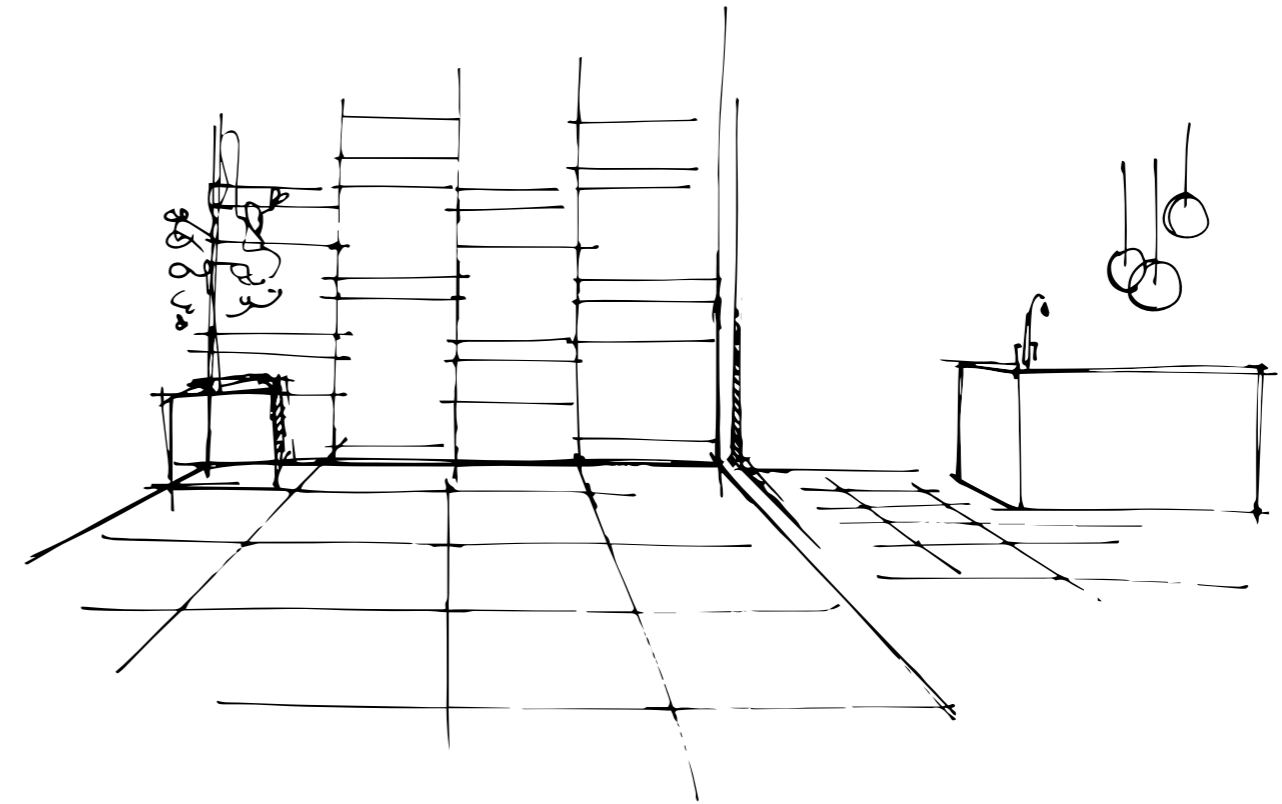


METAL
+
MARBLE



METAL
+
WOOD





Parte esterna abitazione:
gioco di formati con lastre
effetto ossidato di diverse dimensioni.
Abbinare ceramica con superficie
pietra a pavimento
Pianta fiorita in vaso

External walls, home: design featuring
a combination of different-sized
rust-effect plabs/
Team ceramic plabs with stone paving
Flowering plant in pot

RUST

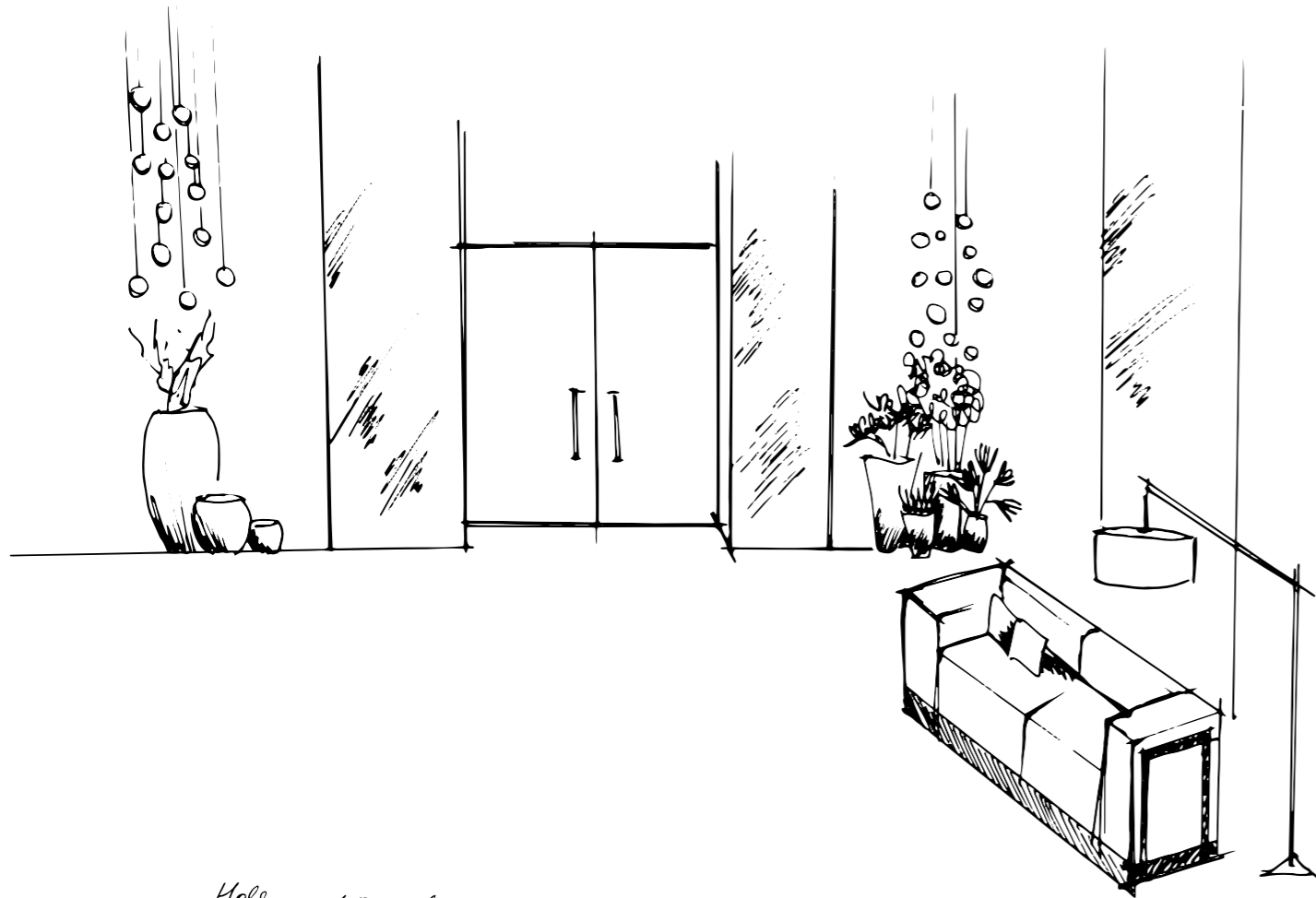
Outdoor: Rust 60x120 - Rust Mix Sizes 60x120 - Unika Grey Bocc. 60x60
Indoor: Mosaico Losanga Rust 30x60 - Rust Lapp. 60x120 / 60x60



Rust 160x320 rett. - Native Ash 120x120 rett. - LAB325 Form Ash 120x270 rett.

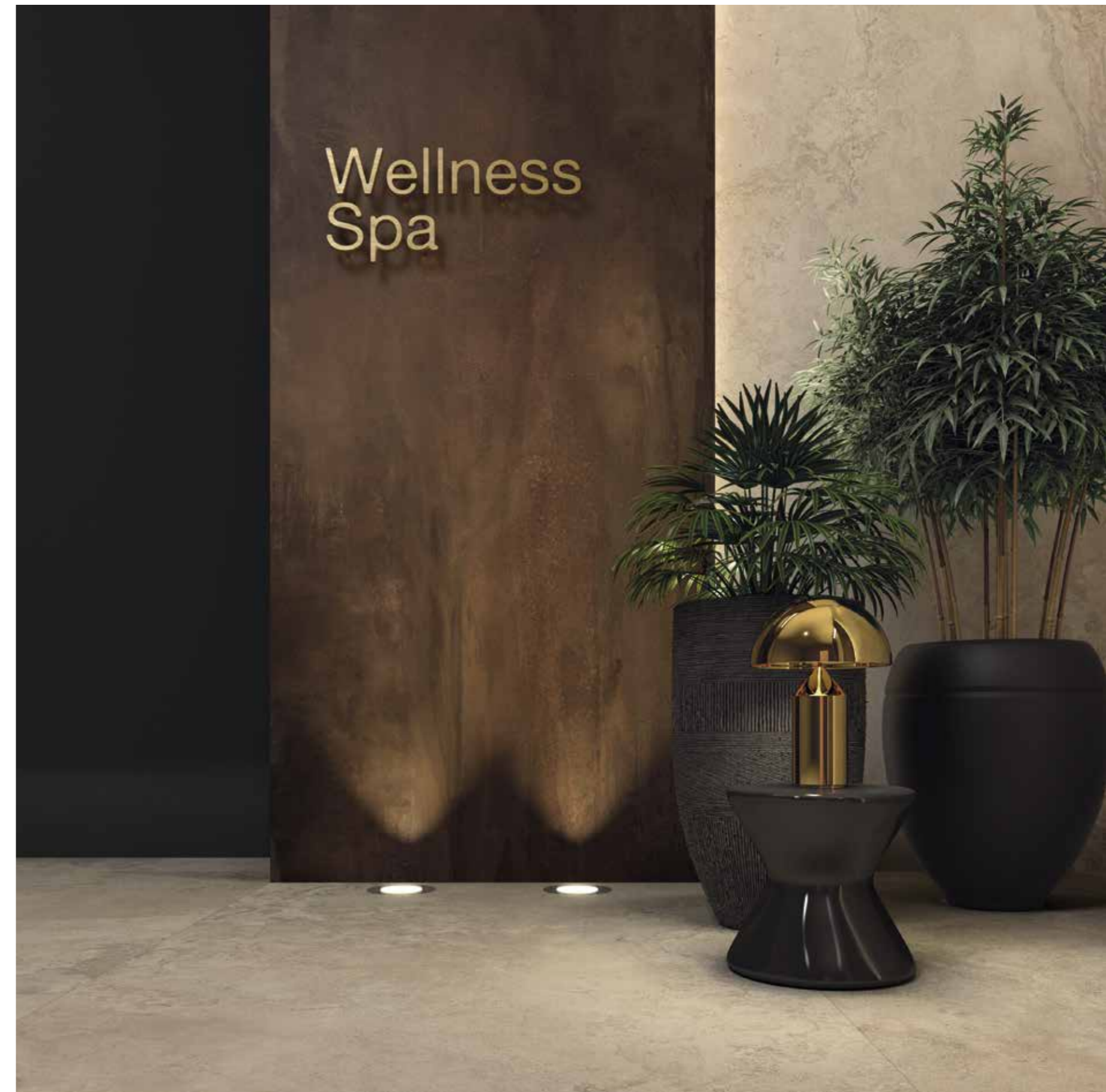


Rust 60x120 rett. - Ghost Ivory 120x270 rett. - Ghost Reveal Ivory 11,5x23 nat.



Hall molto elegante
 con contrasto forte
 fra grès effetto pietra
 e Corten
 Grandi formati
 Illuminazione del basso
 Verde ripiegato in cupolo

Elegant hall
 contrast between stone
 and Corten
 large size
 Lighting from the bottom

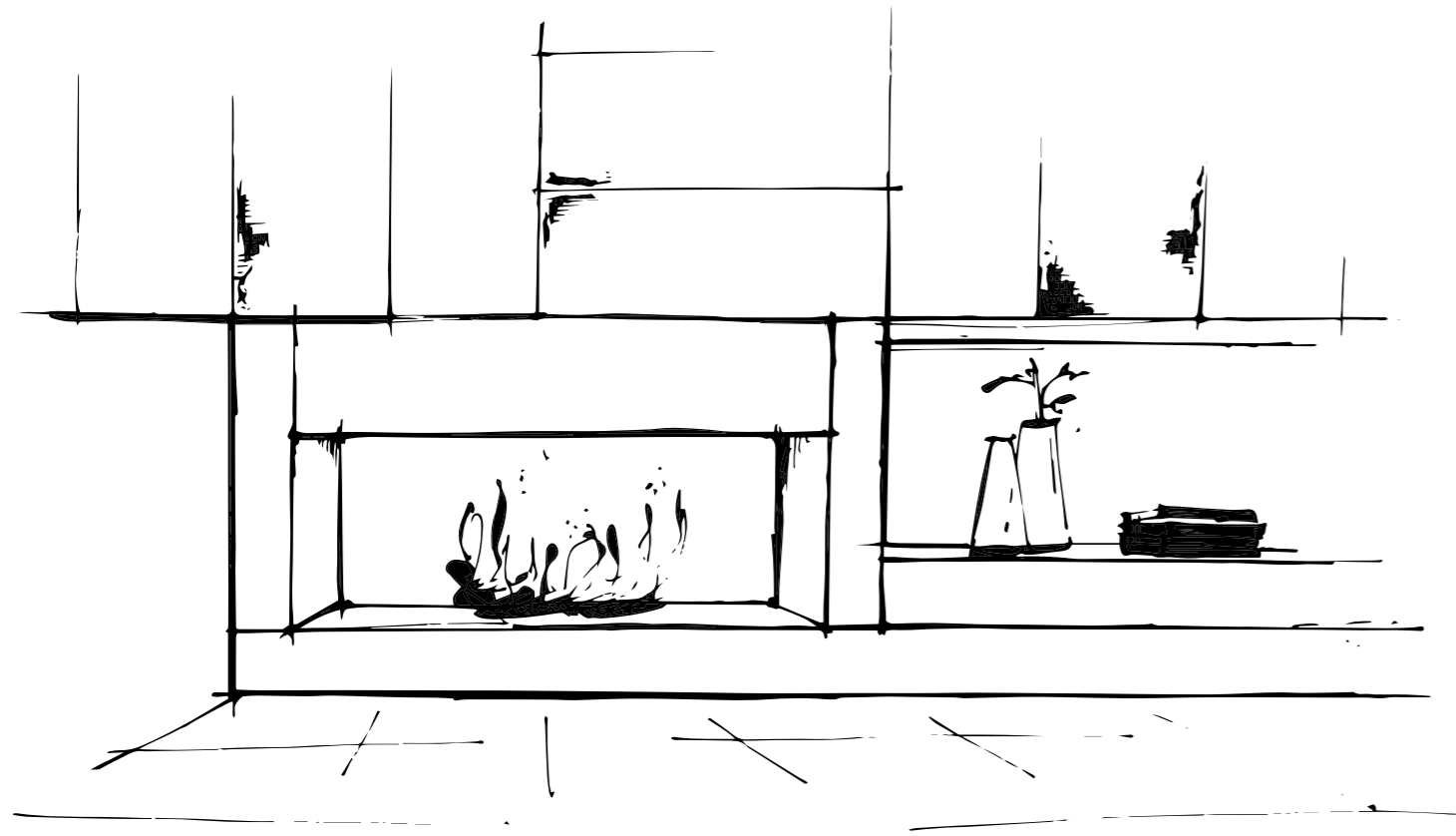


Rust rett. 160x320 - Alpes Sand rett. 160x320



Wellness
Spa

DUNE



Toni caldi e chiari per il pavimento
del living, in contrasto con gli
arredi scuri e la struttura camino
Prevedere base in marmo per
il camino

Warm, pale tones for the living room floor
provide a stylish contrast with the dark
furnishings and the fireplace feature
Include marble hearth



Dune rett. 60x120

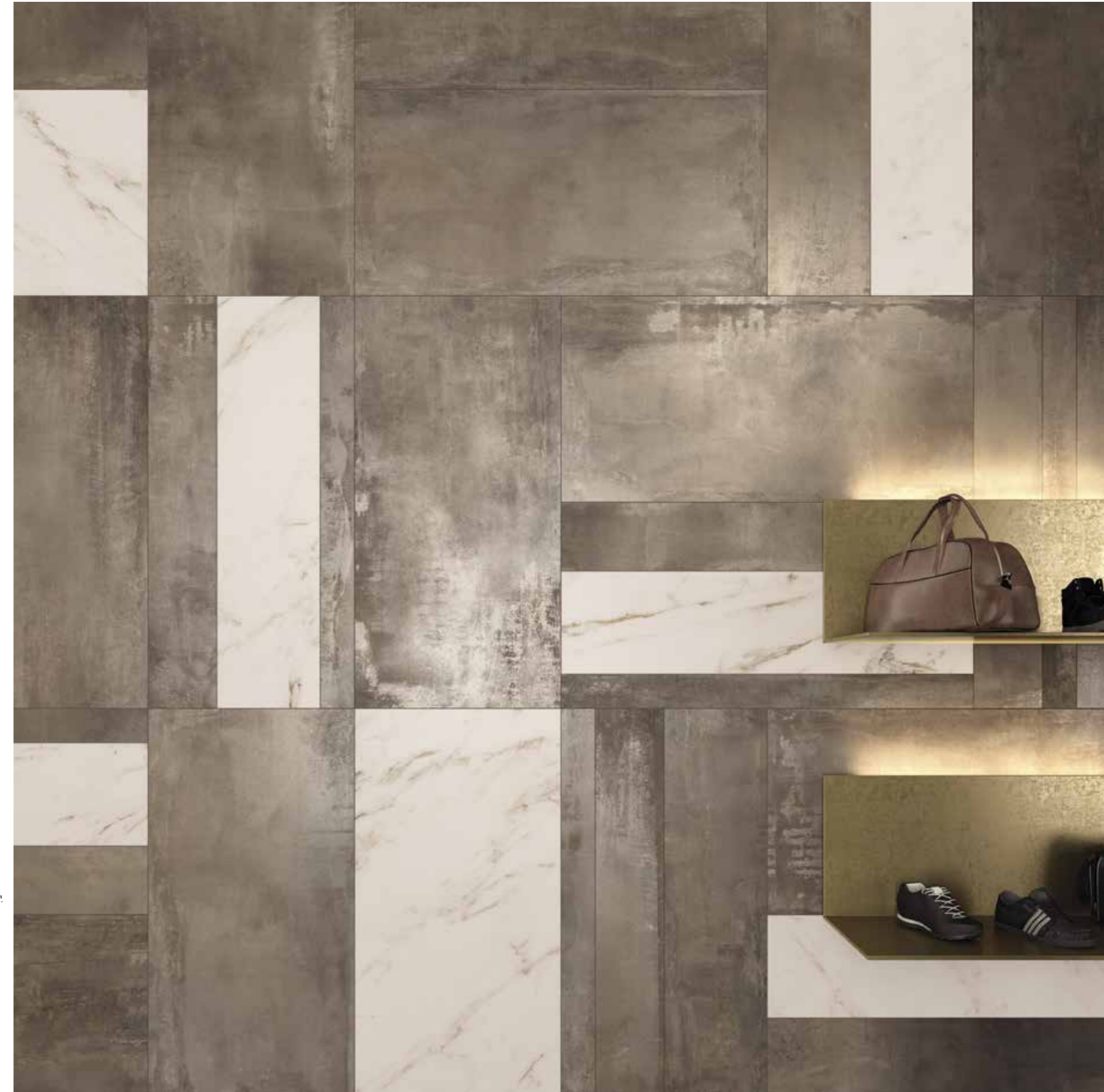
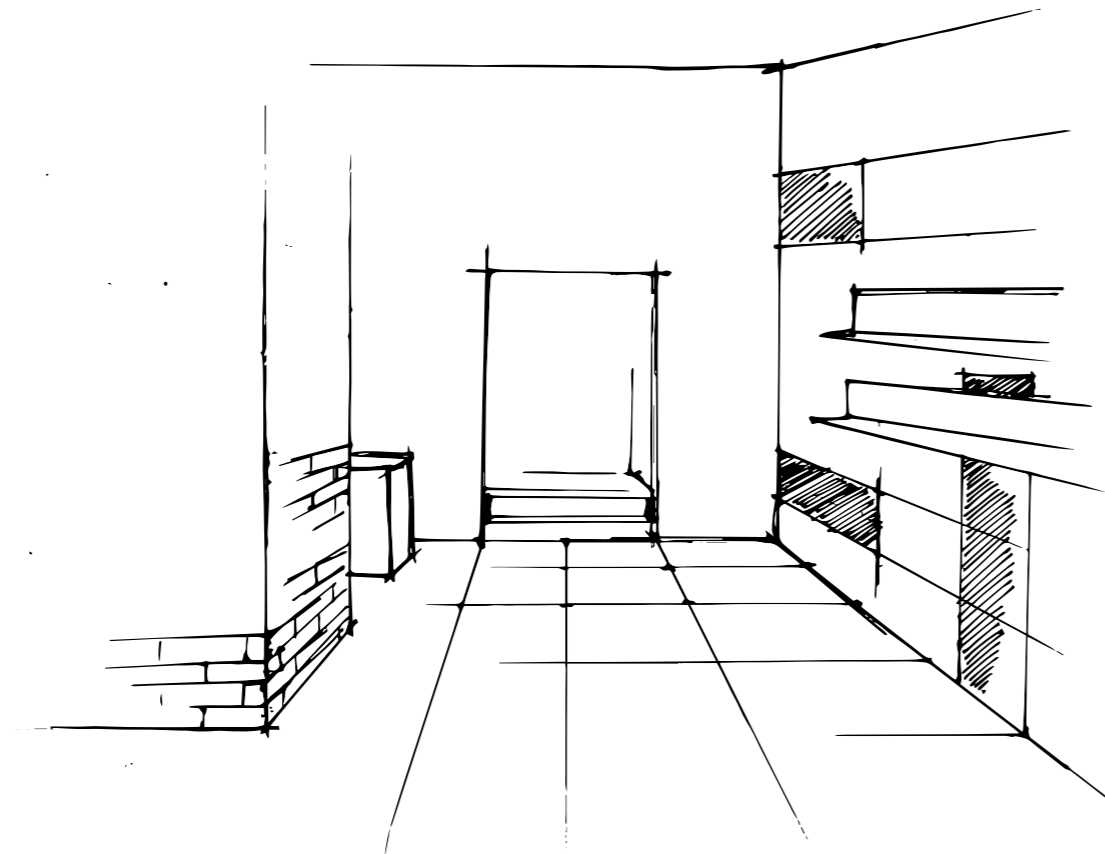


MUD



Per showroom, al 1° piano utilizzare lastre
effetto corten nero a pavimento e parete
murata 3D
Parete espositiva: posa multiformato
d'effetto con stecche lastre in colorazioni più calde
Posa marmo ceramico nella parte scala
e nella parete espositiva
Mensole ad L in metallo color ottone
retroilluminato

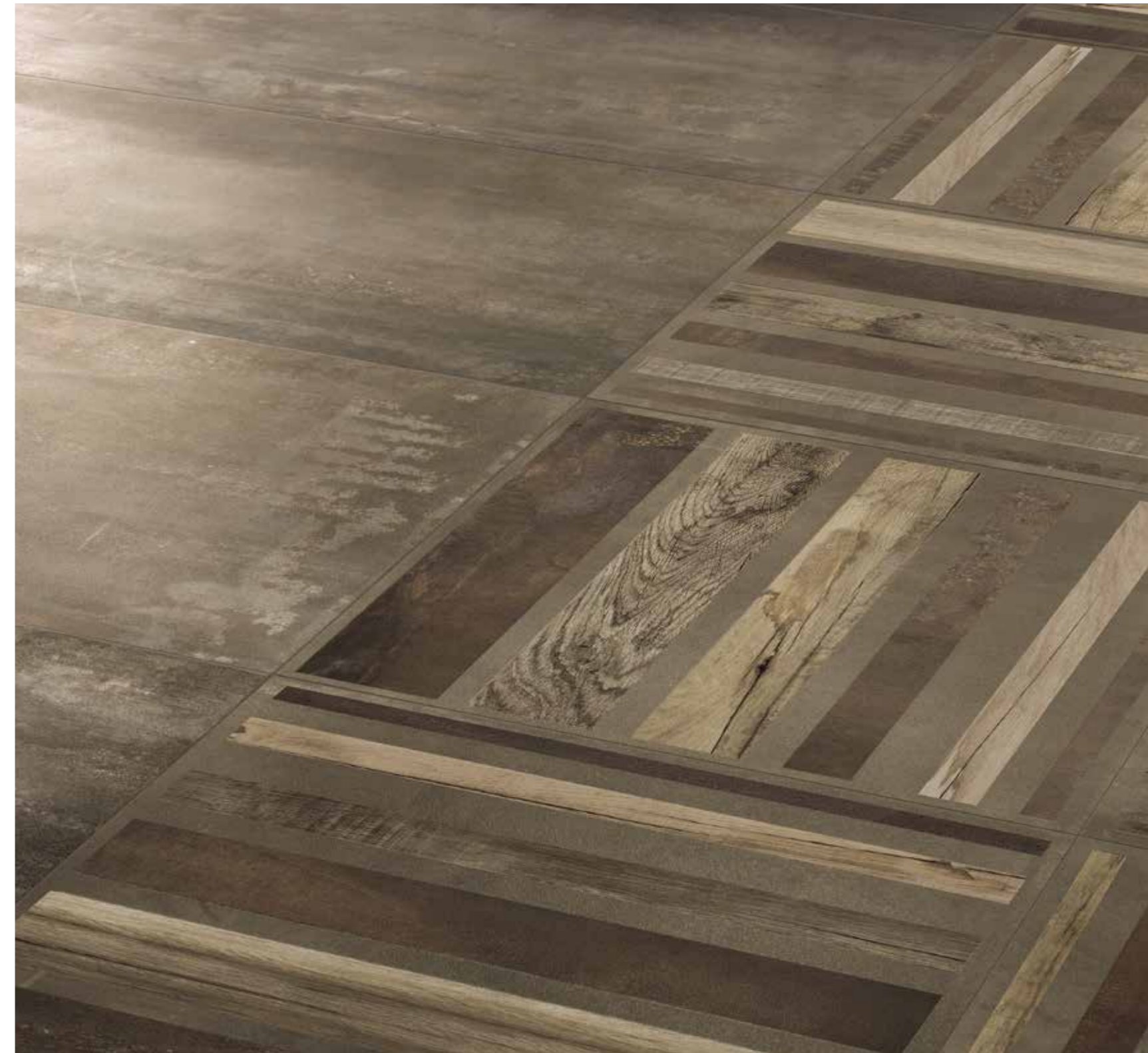
For the showroom, on the first floor,
use black weathering steel-effect slabs on the floor
and 3D dwarf wall effect on the walls
Display wall: high-impact multi-site
design with the same slabs in warmer tones
Fit ceramic marble tiles on the walls of the
stairway and on the display wall
Brass-coloured metal L-shaped shelves
with back-lighting



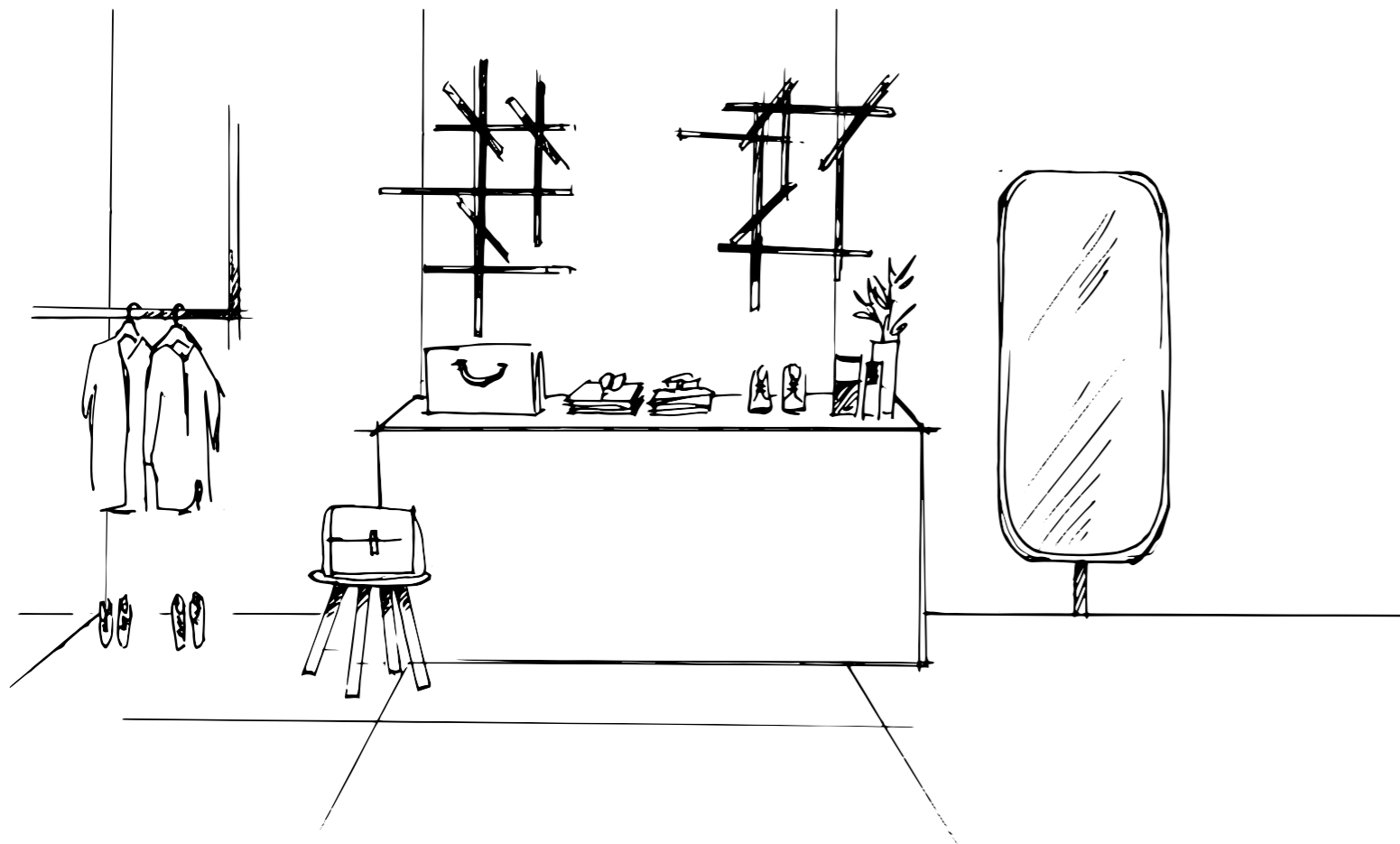
Mud rett. 60x120 - Mud Mix Sizes rett. 60x120 - Sensi Calacatta Select Sablè rett. 60x120 / 30x120



Mud rett. 60x120 - Duo Hot rett. 60x60



DARK



Dark rett. 160x320 - 120x120

Dark rett. 160x320 - 120x120



Dark rett. 60x120 - Mud Lapp. rett. 60x120



Dark rett. 60x120 - Gradone Top Dark rett. - Sensi Calacatta Select Sablè rett. 60x120



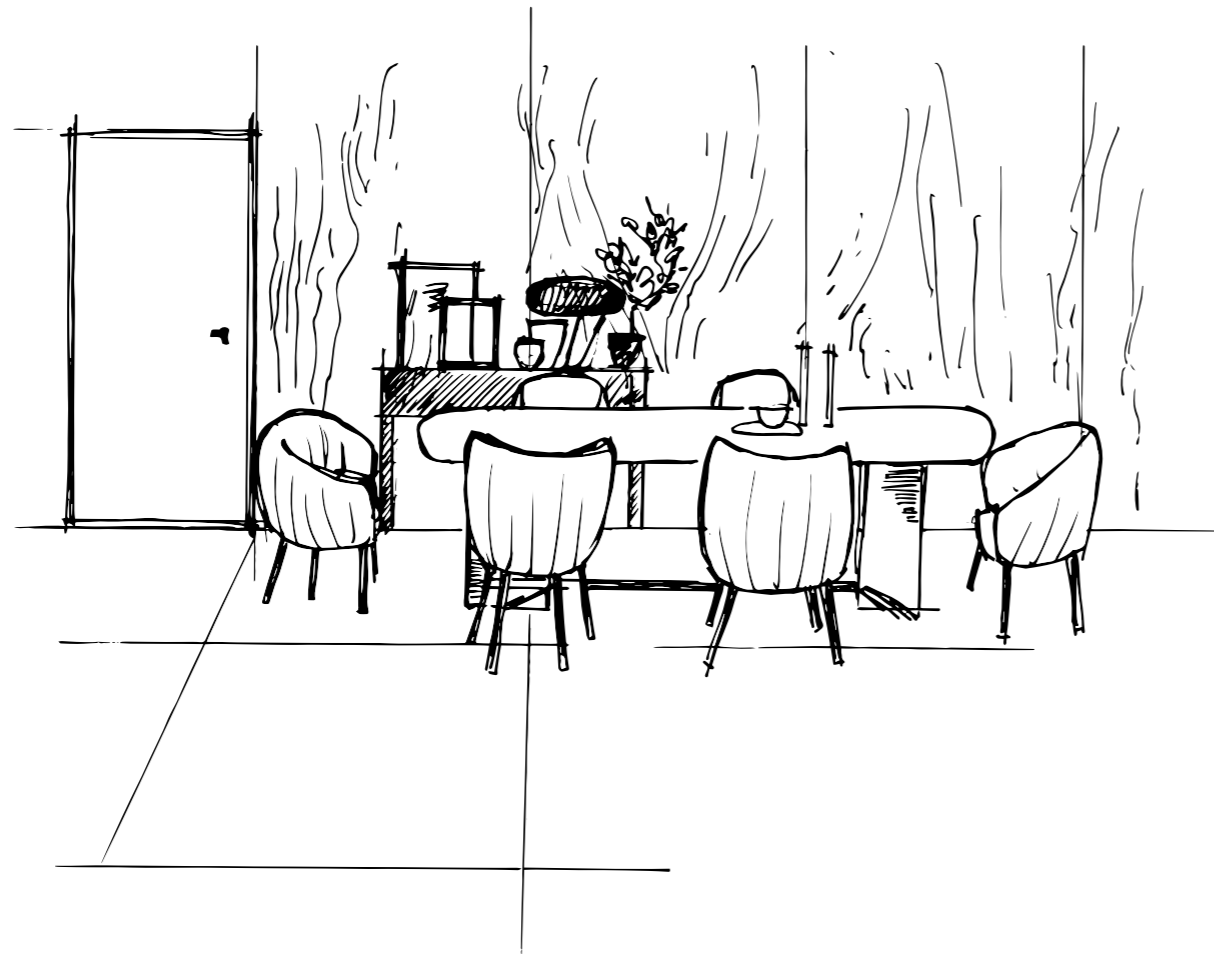
Mud rett. 60x120 - Dark rett. 60x120 - Mix Sizes rett. 60x120 - Sensi Calacatta Select Sablè rett. 60x120 / 30x120 - Do Up Street Black 60x120

PEARL

Elegante sofferto molto luminoso
Permette con poche sedole
formare quadrato 120 x 120
arredamento chiaro

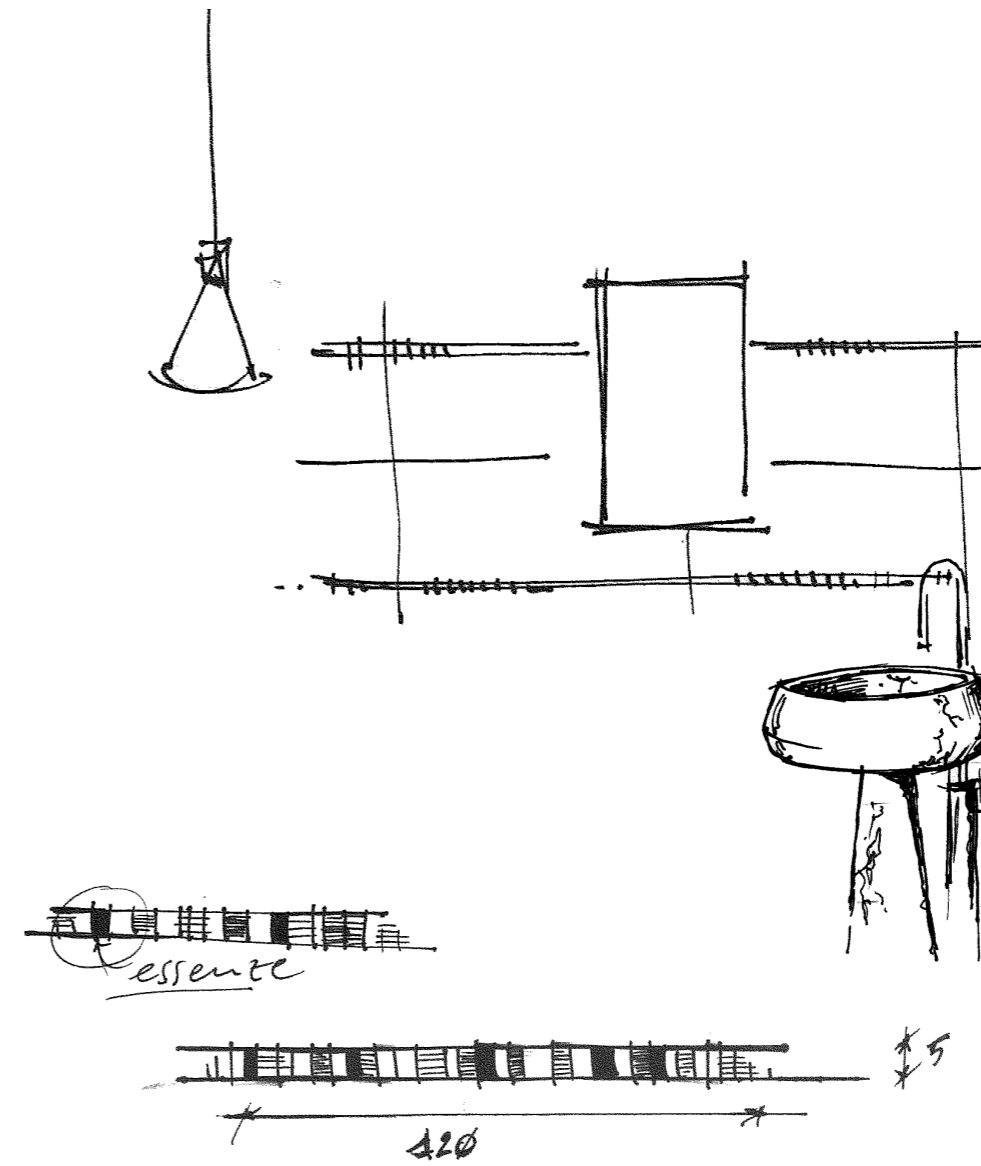
Elegant bright living room
regular living floor
square size 120 x 120
light color walls

Consolle nera
dark console
lampadario protagonista
main chandelier



Pearl rett. 120x120 - Sensi Onice Beige LUX rett. 120x240





Mixare legno a materiali ceramici chiari
Abbinare sanitari con linee morbide
in marmo scuro
Miscelatori in ottone

Team wood with pale ceramic tiling
Combine with dark marble bathroom
furnishings with soft lines
Brass mixer taps



Pearl rett. 60x120

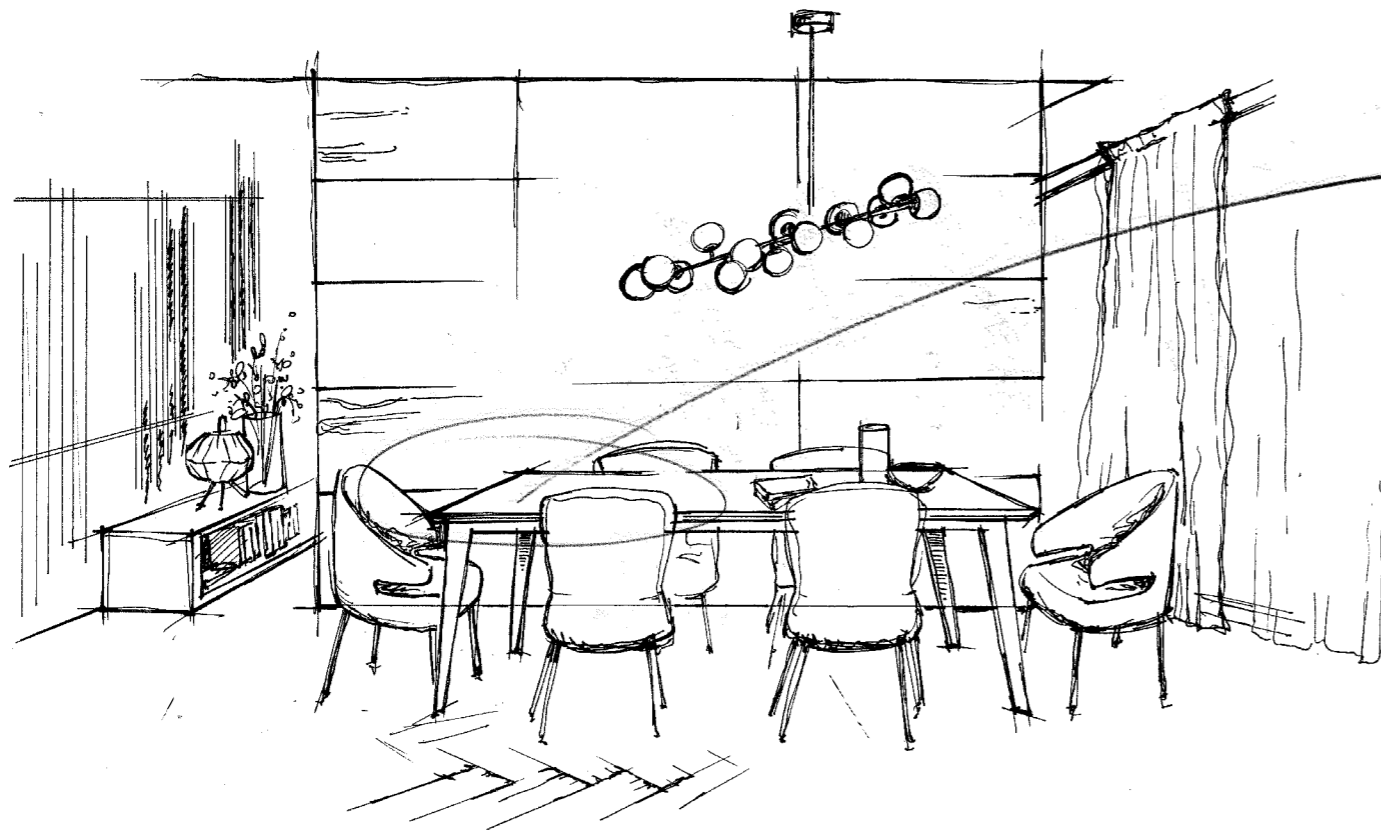


Silver rett. 60x60



Gusto elegante; pavimento perlato posato a
sua di pesce + parete d'impatto con lastre effetto marmo
(cercare grafica importante)
Tocco di colore nelle sedute

Stylish elegance; pearl-effect floor slabs laid
in herringbone design + high-impact wall
with marble effect slabs
(find graphics with high visual impact)
A hint of colour in the seating

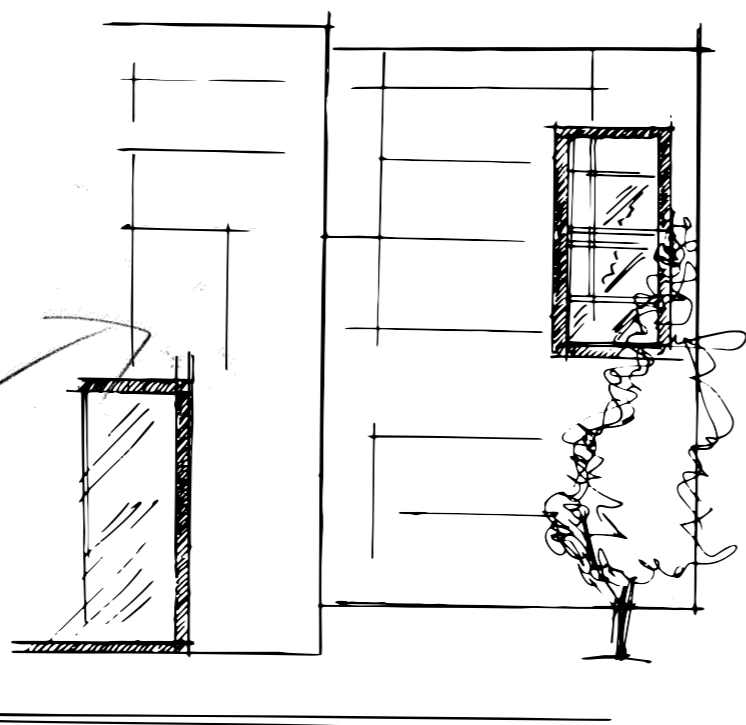


Indoor: Pearl rett. 30x120
Outdoor: Dolphin Grey Aged rett. 20x120

Indoor: Pearl rett. 30x120 - Sensi Arabesque Silver LUX rett. 60x120
Outdoor: Dolphin Grey Aged rett. 20x120

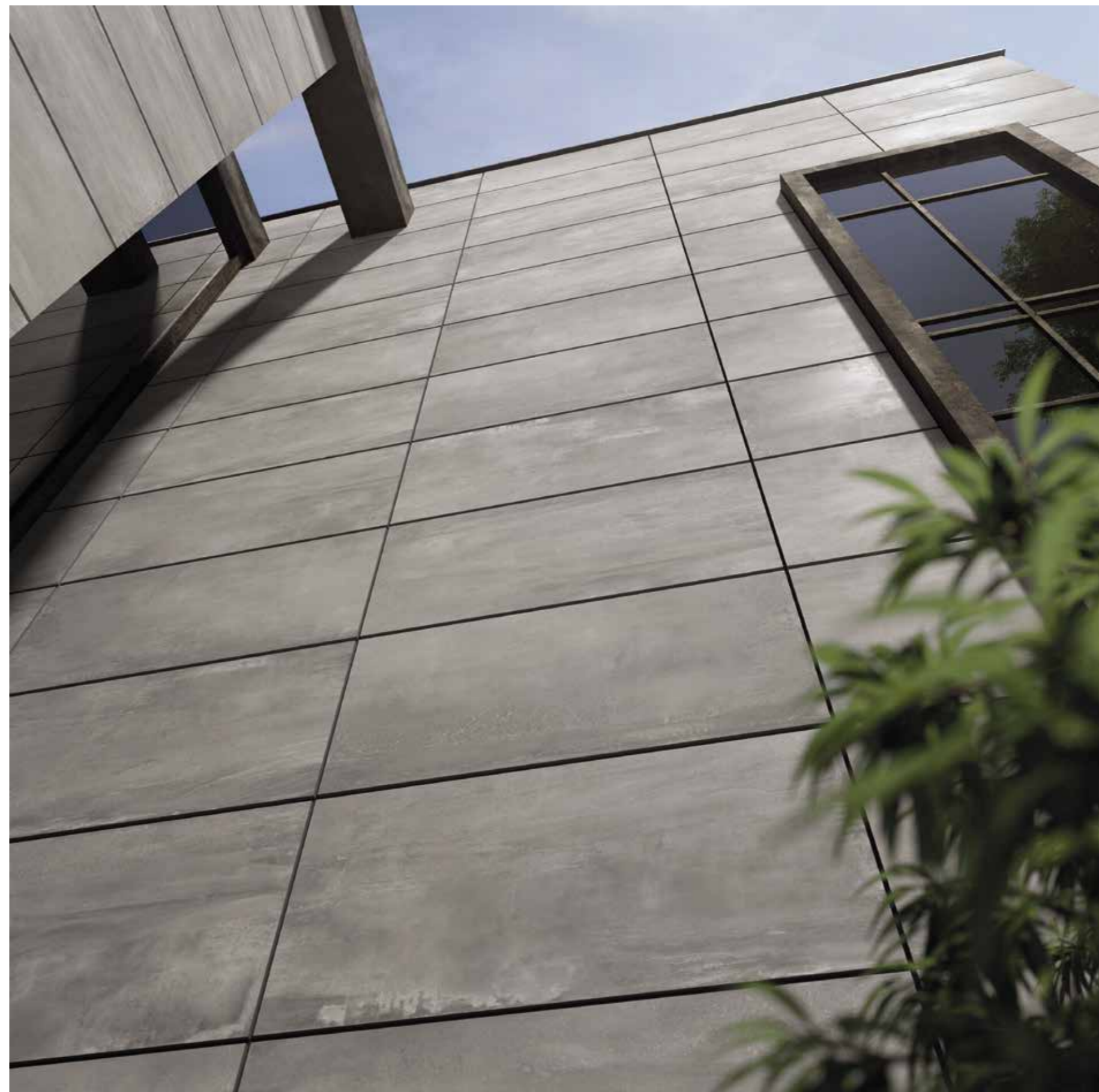


SILVER



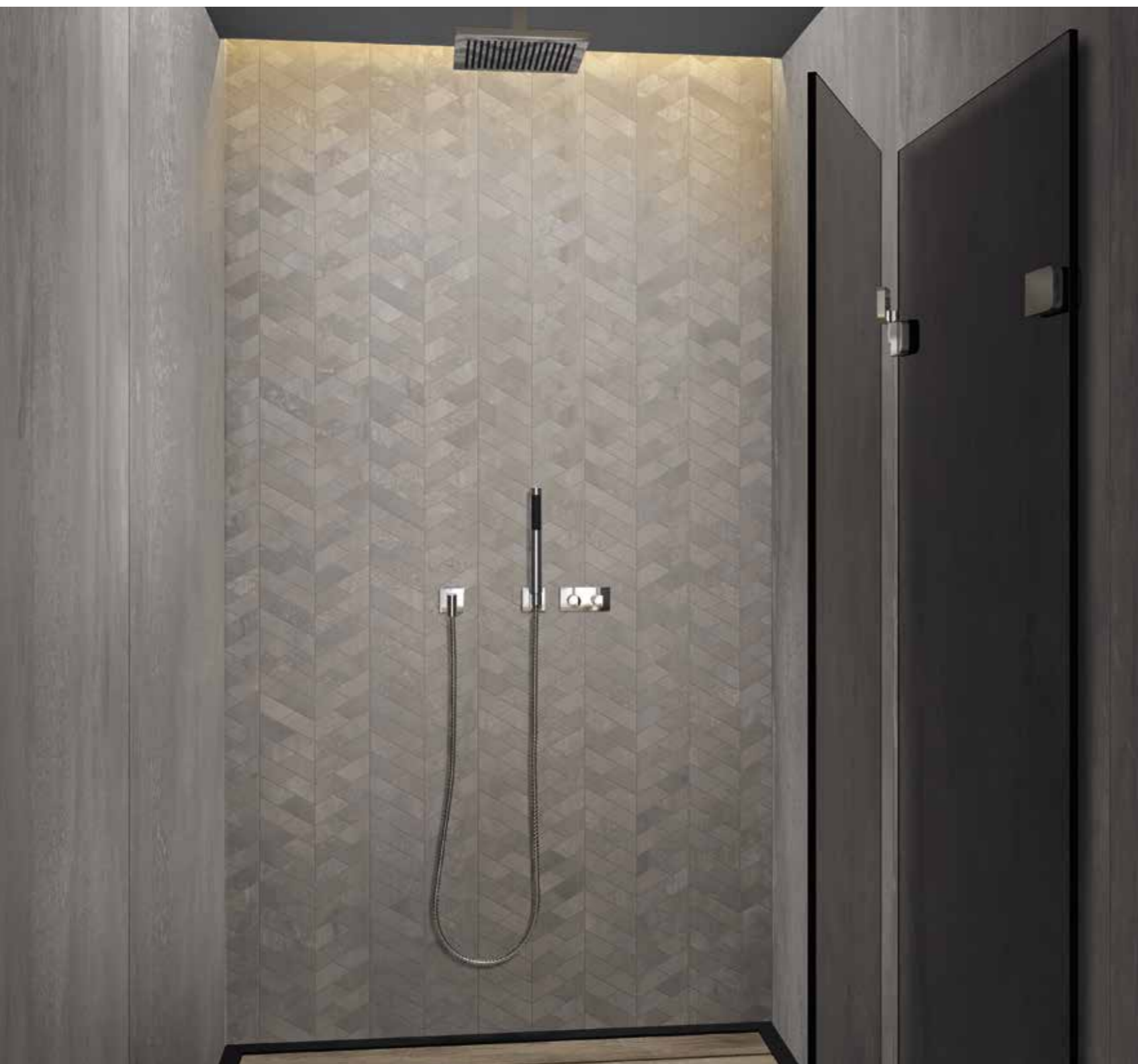
facciate esterne
minimale in colore Silver
~~struttura~~
struttura esterna
in metallo scuro

minimal external facade
silver grey
window with dark iron structure



Silver rett. 120x240

Silver rett. 120x240 - Mosaico Versus Silver 28x29

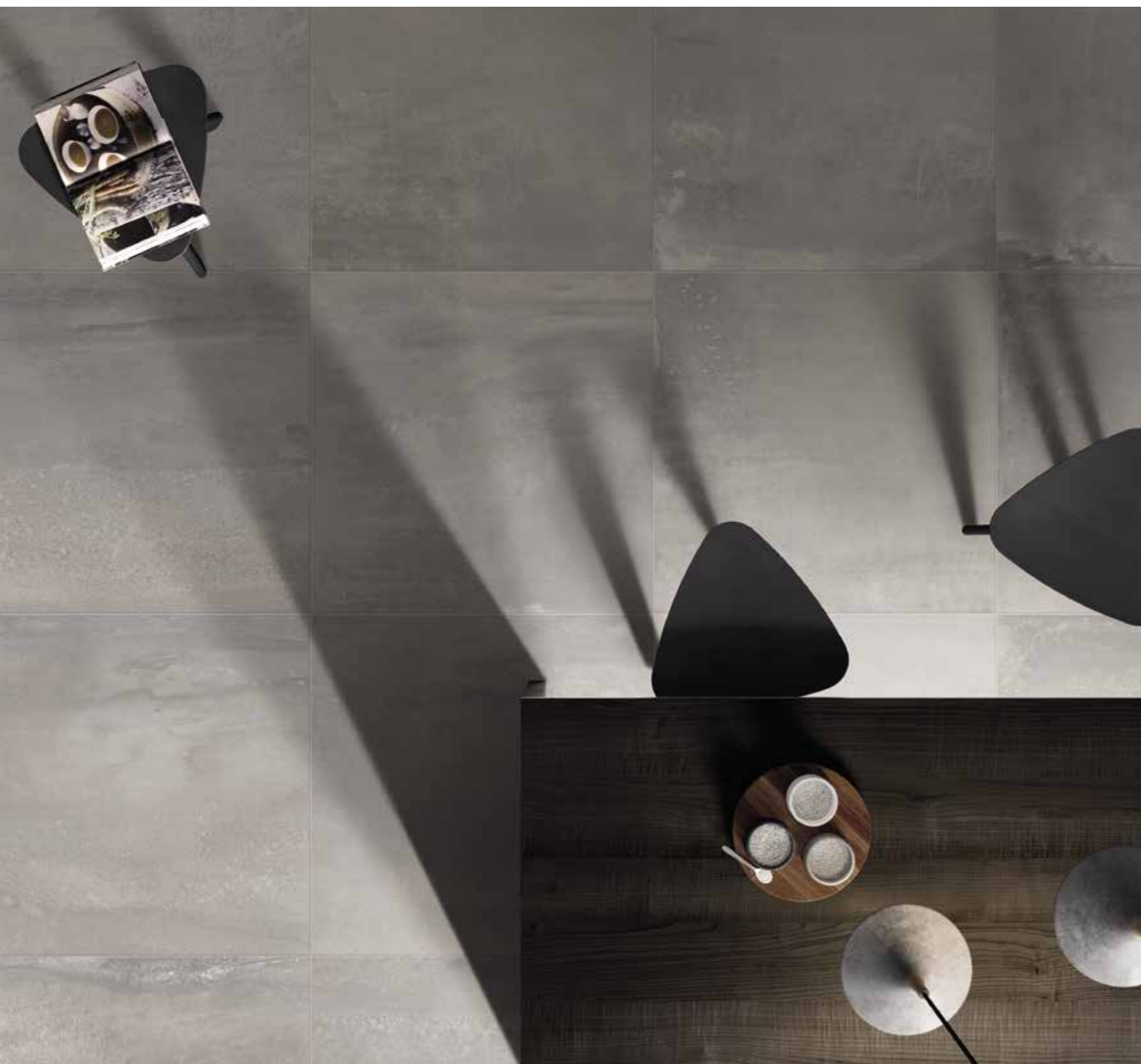


Silver rett. 80x160 - 120x240 - Matita alluminio rame 0,5x120 - Crossroad Wood grey rett. 20x120

Silver Lapp. rett. 60x120 - Dark rett. 60x120



Silver rett. 80x80



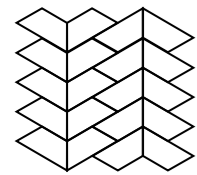
Silver rett. 30x120 - Fascia Raku Dark mix 2 30x120

RUST

* 160x320 rett.	0000299	6 mm
120x240 rett.	0000311	7 mm
120x120 rett.	0000314	
* 80x160 rett.	0000305	9 mm
* 80x80 rett.	0000308	

ABKSTONE

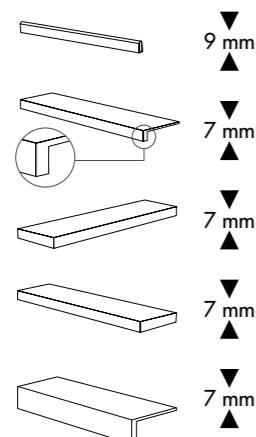
163,5x323 nat.	0000296	6 mm
163,5x323 nat.	0003779	12 mm



30x29	5	
MOS. VERSUS RUST		7 mm
0000961	rett.	

* Fino ad esaurimento scorte l' art. verrà consegnato a spessore 7 mm. The item will be delivered 7 mm thick until stocks are exhausted.

* BATTISCOPA rett.	0000720	9 mm
5,5x80	8	
GRADONE TOP rett.	0000724	7 mm
32x120x4,5x1,5	1	
ANG. TOP SX rett.	0000763	7 mm
32x120x4,5x1,5	1	
ANG. TOP DX rett.	0000767	7 mm
32x120x4,5x1,5	1	
GRADONE JOLLY rett.	0004570	7 mm
40x120x20	1	



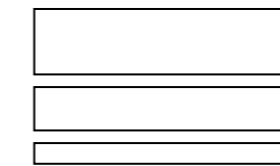
160x320

RUST

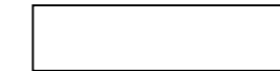
9 mm



60x120	2
INTERNO 9 RUST	
19R34300	rett.
19L34300	lapp rett.



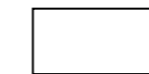
60x120	2
INTERNO 9 RUST	
19R34310	mix sizes rett.
Pcs/box:	
30x120	2
20x120	2
10x120	2



30x120	4
INTERNO 9 RUST	
19R57300	rett.
19L57300	lapp. rett.



60x60	3
INTERNO 9 RUST	
19R01300	rett.
19L01300	lapp. rett.



30x60	6
INTERNO 9 RUST	
19R03300	rett.

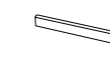


30x60	4
MOS. LOSANGA RUST	
19R03301	rett.



30x30	6
MOS. QUADRETTI RUST	
19R09301	rett.

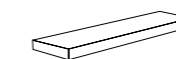
BATTISCOPA rett.	19R01302
5,5x60	10



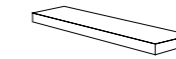
GRADONE TOP rett.	19R34301
32x120x4,5x2	1



ANG. TOP SX rett.	19R34302
32x120x4,5x2	1



ANG. TOP DX rett.	19R34303
32x120x4,5x2	1



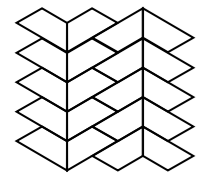
60x120

DARK

* 160x320 rett.	0000300	▼ 6 mm ▲
120x240 rett.	0000312	▼ 7 mm ▲
120x120 rett.	0000315	
* 80x160 rett.	0000306	▼ 9 mm ▲
* 80x80 rett.	0000309	

ABKSTONE

163,5x323 nat.	0000297	⊗ 6 mm
163,5x323 nat.	0005319	⊗ 12 mm



30x29	⊗ 5	▼ 7 mm ▲
MOS. VERSUS DARK	0000962	rett.

* Fino ad esaurimento scorte l' art. verrà consegnato a spessore 7 mm. The item will be delivered 7 mm thick until stocks are exhausted.

BATTISCOPA rett.	0000721	▼ 9 mm ▲
* 5,5x80	⊗ 8	
GRADONE TOP rett.	0000725	▼ 7 mm ▲
32x120x4,5x1,5	⊗ 1	
ANG. TOP SX rett.	0000764	▼ 7 mm ▲
32x120x4,5x1,5	⊗ 1	
ANG. TOP DX rett.	0000768	▼ 7 mm ▲
32x120x4,5x1,5	⊗ 1	
GRADONE JOLLY rett.	0004571	▼ 7 mm ▲
40x120x20	⊗ 1	



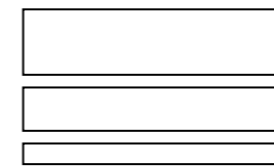
160x320

DARK

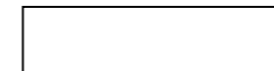
▼
9 mm
▲



60x120 ⊗ 2
INTERNO 9 DARK
I9R34200 rett.
I9L34200 lapp rett.



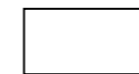
60x120 ⊗ 2
INTERNO 9 DARK
I9R34210 mix sizes rett.
Pcs/box: 30x120 ⊗ 2
20x120 ⊗ 2
10x120 ⊗ 2



30x120 ⊗ 4
INTERNO 9 DARK
I9R57200 rett.
I9L57200 lapp rett.



60x60 ⊗ 3
INTERNO 9 DARK
I9R01200 rett.
I9L01200 lapp rett.



30x60 ⊗ 6
INTERNO 9 DARK
I9R03200 rett.



30x60 ⊗ 4
MOS. LOSANGA DARK
I9R03201 rett.



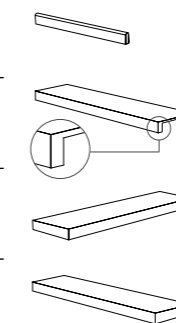
30x30 ⊗ 6
MOS. QUADRETTI DARK
I9R09201 rett.

BATTISCOPA rett. **I9R01202**
5,5x60 ⊗ 10

GRADONE TOP rett. **I9R34201**
32x120x4,5x2 ⊗ 1

ANG. TOP SX rett. **I9R34202**
32x120x4,5x2 ⊗ 1

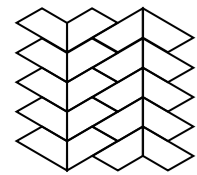
ANG. TOP DX rett. **I9R34203**
32x120x4,5x2 ⊗ 1



30x120

SILVER

* 160x320 rett.	0000301	6 mm
120x240 rett.	0000313	7 mm
120x120 rett.	0000316	
* 80x160 rett.	0000307	9 mm
* 80x80 rett.	0000310	

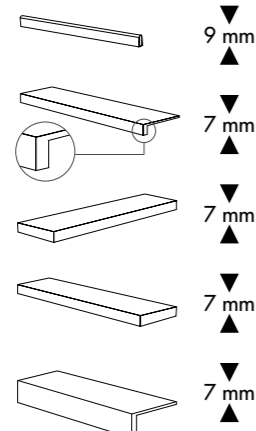


30x29 \varnothing 5
MOS. VERSUS SILVER
0000963 rett.

7 mm

* Fino ad esaurimento scorte l' art. verrà consegnato a spessore 7 mm. The item will be delivered 7 mm thick until stocks are exhausted.

* BATTISCOPA rett.	0000722	9 mm
5,5x80 \varnothing 8		
GRADONE TOP rett.	0000726	7 mm
32x120x4,5x1,5 \varnothing 1		
ANG. TOP SX rett.	0000765	7 mm
32x120x4,5x1,5 \varnothing 1		
ANG. TOP DX rett.	0000769	7 mm
32x120x4,5x1,5 \varnothing 1		
GRADONE JOLLY rett.	0004572	7 mm
40x120x20 \varnothing 1		

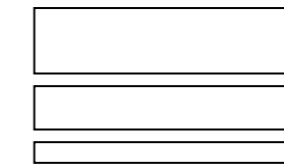


SILVER

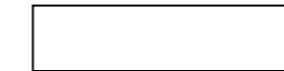
9 mm



60x120 \varnothing 2
INTERNO 9 SILVER
I9R34150 rett.
I9L34150 lapp. rett.



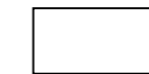
60x120 \varnothing 2
INTERNO 9 SILVER
I9R34160 mix sizes rett.
Pcs/box: 30x120 \varnothing 2
20x120 \varnothing 2
10x120 \varnothing 2



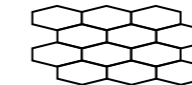
30x120 \varnothing 4
INTERNO 9 SILVER
I9R57150 rett.
I9L57150 lapp. rett.



60x60 \varnothing 3
INTERNO 9 SILVER
I9R01150 rett.
I9L01150 lapp. rett.



30x60 \varnothing 6
INTERNO 9 SILVER
I9R03150 rett.



30x60 \varnothing 4
MOS. LOSANGA SILVER
I9R03151 rett.



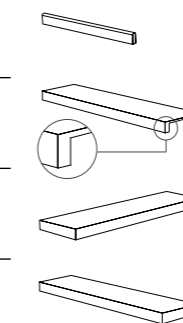
30x30 \varnothing 6
MOS. QUADRETTI SILVER
I9R09151 rett.

BATTISCOPA rett. I9R01152
5,5x60 \varnothing 10

GRADONE TOP rett. I9R34151
32x120x4,5x2 \varnothing 1

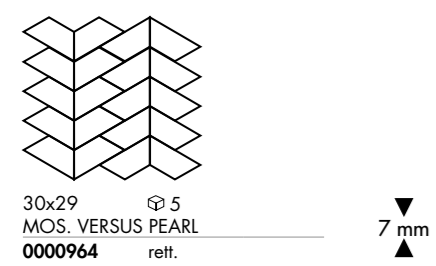
ANG. TOP SX rett. I9R34152
32x120x4,5x2 \varnothing 1

ANG. TOP DX rett. I9R34153
32x120x4,5x2 \varnothing 1



PEARL

120x240 rett.	0000629	7 mm
120x120 rett.	0000630	
* 80x160 rett.	0000627	9 mm
* 80x80 rett.	0000628	

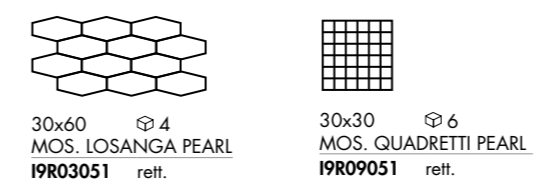
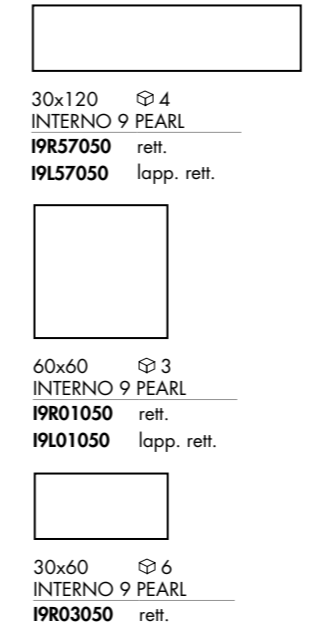
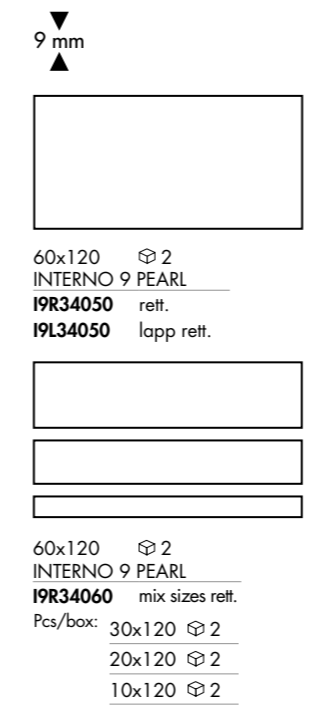


* Fino ad esaurimento scorte l' art. verrà consegnato a spessore 7 mm. The item will be delivered 7 mm thick until stocks are exhausted.

* BATTISCOPA rett. 5,5x80 8	0000723	9 mm
GRADONE TOP rett. 32x120x4,5x1,5 1	0000727	7 mm
ANG. TOP SX rett. 32x120x4,5x1,5 1	0000766	7 mm
ANG. TOP DX rett. 32x120x4,5x1,5 1	0000770	7 mm
GRADONE JOLLY rett. 40x120x20 1	0004573	7 mm



PEARL



BATTISCOPA rett. 5,5x60 10	I9R01052	
GRADONE TOP rett. 32x120x4,5x2 1	I9R34051	
ANG. TOP SX rett. 32x120x4,5x2 1	I9R34052	
ANG. TOP DX rett. 32x120x4,5x2 1	I9R34053	

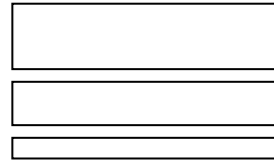


MUD

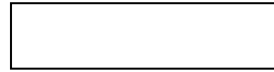
9 mm



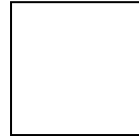
60x120 ☉ 2
INTERNO 9 MUD
I9R34250 rett.
I9L34250 lapp rett.



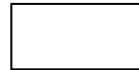
60x120 ☉ 2
INTERNO 9 MUD
I9R34260 mix sizes rett.
Pcs/box: 30x120 ☉ 2
20x120 ☉ 2
10x120 ☉ 2



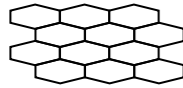
30x120 ☉ 4
INTERNO 9 MUD
I9R57250 rett.
I9L57250 lapp rett.



60x60 ☉ 3
INTERNO 9 MUD
I9R01250 rett.
I9L01250 lapp rett.



30x60 ☉ 6
INTERNO 9 MUD
I9R03250 rett.



30x60 ☉ 4
MOS. LOSANGA MUD
I9R03251 rett.

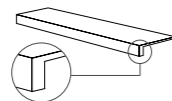


30x30 ☉ 6
MOS. QUADRETTI MUD
I9R09251 rett.

BATTISCOPA rett.
5,5x60 ☉ 10 **I9R01252**



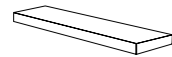
GRADONE TOP rett.
32x120x4,5x2 ☉ 1 **I9R34251**



ANG. TOP SX rett.
32x120x4,5x2 ☉ 1 **I9R34252**



ANG. TOP DX rett.
32x120x4,5x2 ☉ 1 **I9R34253**

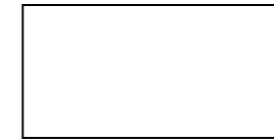


60x60

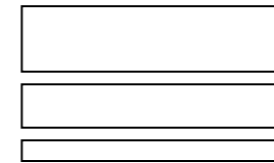


DUNE

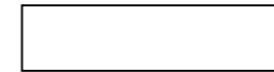
9 mm



60x120 ☉ 2
INTERNO 9 DUNE
I9R34100 rett.
I9L34100 lapp rett.



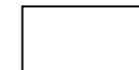
60x120 ☉ 2
INTERNO 9 DUNE
I9R34110 mix sizes rett.
Pcs/box: 30x120 ☉ 2
20x120 ☉ 2
10x120 ☉ 2



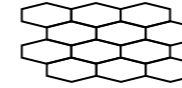
30x120 ☉ 4
INTERNO 9 DUNE
I9R57100 rett.
I9L57100 lapp rett.



60x60 ☉ 3
INTERNO 9 DUNE
I9R01100 rett.
I9L01100 lapp rett.



30x60 ☉ 6
INTERNO 9 DUNE
I9R03100 rett.



30x60 ☉ 4
MOS. LOSANGA DUNE
I9R03101 rett.

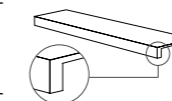


30x30 ☉ 6
MOS. QUADRETTI DUNE
I9R09101 rett.

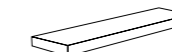
BATTISCOPA rett.
5,5x60 ☉ 10 **I9R01102**



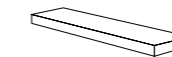
GRADONE TOP rett.
32x120x4,5x2 ☉ 1 **I9R34101**



ANG. TOP SX rett.
32x120x4,5x2 ☉ 1 **I9R34102**



ANG. TOP DX rett.
32x120x4,5x2 ☉ 1 **I9R34103**



30x60



60x60  3
DUO INTERNO 9 COLD
19R01160 rett. 




60x60  3
DUO INTERNO 9 HOT
19R01260 rett. 



5x30  4
*FASCIA ESSENZE MIX
19R03053

4x30  4
FASCIA ARDESIA BRONZO
RER09054 rett.

4x30  4
FASCIA ARDESIA GRIGIO
RER09204 rett.
(Pietra naturale - Natural stone)

30x120  2
FASCIA RAKU DARK MIX 2
19R57051


(Metalli preziosi - Precious metals)



30x120  2
FASCIA RAKU LIGHT MIX 2
19R57052

(Metalli preziosi - Precious metals)



19,5x8,5  4
LOSANGA RAKU MIX
19R03052

* Decorazione realizzata in legno trattato e garantito per l'utilizzo nell'ambiente bagno. Il tipo di verniciatura fa in modo che non tema l'umidità, rendendo possibile la fugatura con normali stucchi ceramici epossidici. Dopo la posa in opera e la stuccatura, pulire il prima possibile con acqua avendo cura di asportare ogni residuo di stucco.

* Decorative tile made in treated wood, guaranteed also for use in the bathroom. This kind of varnish protects from humidity, therefore it's possible filling with standard eposidic filler for ceramics. After placing and filling, please clean whitth water as soon as possible, carefully removing every mark left by the filler.

DECORI DA RIVESTIMENTO
WALL COORDINATED DECORS




0,5x120  4
MATITA ALLUMINIO
0000086
Parte superiore arrotondata / Rounded Top


0,5x120  4
MATITA ALLUMINIO WHITE
0000087
Parte superiore arrotondata / Rounded Top


0,5x120  4
MATITA ALLUMINIO BLACK
0000088
Parte superiore arrotondata / Rounded Top


0,5x120  4
MATITA ALLUMINIO RAME
0000556
Parte superiore piatta / Flat Top


0,5x120  4
MATITA ALLUMINIO BRONZO
0000557
Parte superiore piatta / Flat Top

Articoli realizzati in alluminio per l'uso a parete, adatti a raccordare piastrelle di diverso spessore (9 mm / 7 mm)

Aluminium strip for use between wall tiles of different thicknesses (9 mm / 7 mm)

IMBALLI/PACKAGING

F.to nominale Nominal size	Finitura Finish	Spessore Thickness	F.to reale (mm) Work size (mm)	Imballo Packing	Pz/Scat. Pcs/Box	Mq/Scat. Sqm/Box	Kg/Scat. Kg/Box	Scat./Imb. Box/Packing	Pz Totali Pcs Total	Mq totali Sqm total	Kg Imb. Kg Packing	Kg Totali Kg Total
160x320 64"x128"	rett	6	1596,5x3195	Cassa Crate	-	-	-	-	15	76,80	139	1.279
				Cavalletto container Container Rack pallet	-	-	-	-	36	184,32	180	2.916
120x240 48"x96"	rett	7	1194x2390	Cavalletto Rack pallet	-	-	-	-	40	115,20	100	2.116
				Cassa Crate	-	-	-	-	20	57,60	100	1.108
				Cavalletto container Container Rack pallet	-	-	-	-	40	115,20	115	2.131
120x120 48"x48"	rett.	9	1194x1194	Pallet con sponde Pallet with sides	2	2,88	56,16	18	36	51,84	40	1.051
80x160 32"x64"	rett.	9	797,25x1596,5	Cavalletto Rack pallet	2	2,56	50,00	22	44	56,32	70	1.170
				Pallet con sponde Pallet with sides	2	2,56	50,00	22	44	56,32	40	1.140
80x80 32"x32"	rett.	9	797,25x797,25	pallet	2	1,28	25,00	44	88	56,32	20	1.120
60x120 24"x48"	rett.	9	596x1194	pallet	2	1,44	28,00	30	60	43,20	20	860
60x120 mix sizes	rett.	9	596x1194	pallet	2	1,44	28,00	26	52	37,44	20	748
30x120 12"x48"	rett.	9	297x1194	pallet	4	1,44	28,00	36	144	51,84	20	1.028
60x60 24"x24"	rett.	9	596x596	pallet	3	1,08	21,20	40	120	43,20	20	868
30x60 12"x24"	rett.	9	297x596	pallet	6	1,08	21,20	40	240	43,20	20	868

L'unità minima di vendita per tutti gli articoli (fondi, decori e pezzi speciali) è la scatola completa. / The minimum sales quantity for all items (plain tiles, decorations and special trims) is one full box. I dati relativi agli imballi sono aggiornati al momento della stampa del catalogo e pertanto possono subire variazioni nel corso del tempo. / Data referring to packaging have been update at time of printing; the actual data may be slightly different. Pezzi speciali e decori per effetto delle lavorazioni, possono presentare variazioni di tonalità. / Due to working process special trims and decors, may show variation in tonality.

CERAMIC R-EVOLUTION

Il progetto WIDE ABK parte dalla rivoluzionaria tecnologia produttiva CONTINUA+, che permette di produrre lastre in gres porcellanato robuste e leggere allo stesso tempo, grazie allo spessore ridotto di 6 e 7 mm, fino alla dimensione record di 160x320 cm. Il nuovo sistema di pressatura prevede la compattazione a secco delle materie prime e consente di ottenere superfici particolarmente apprezzabili sia per la qualità estetica che per le performance tecniche.

ABK's WIDE collection consists of tough yet lightweight porcelain slabs with a thickness of just 6 and 7 mm and a record size of 160x320 cm produced using the revolutionary CONTINUA+ technology. The new pressing system involves dry compaction of raw materials and is able to produce surfaces that combine excellent aesthetic quality with outstanding technical performance.



LITE GOES WIDE

Gli spessori 6 e 7 mm consentono di ridurre il peso per mq con interessanti vantaggi in termini di maneggevolezza e movimentazione.

The 6 and 7 mm thicknesses result in a reduced weight per square metre, bringing significant advantages in terms of ease of working and handling.



WIDE IS LEVELING

La combinazione fra impasto ad elevata plasticità, spessore e grande dimensione, dona particolare elasticità al prodotto, per ottenere risultati di posa sempre impeccabili.

The combination of a body with high plasticity, thickness and dimensions makes for a highly elastic product that delivers consistently flawless results.



EASY AS WIDE

La formulazione dell'impasto, unita alla compattazione a secco e alla cottura in forni di nuova concezione, genera un gres particolarmente facile da tagliare e lavorare.

The chemical formulation of the body combined with the raw material dry compaction process produces a porcelain slab that is easy to cut and work with.



WIDE MEANS GREEN

L'impasto contiene il 40% minimo di materie prime di qualità recuperate da altri processi produttivi, per questo i prodotti WIDE possono essere accreditati all'interno del sistema internazionale LEED.

As the body contains a minimum of 40% high-quality raw materials recycled from other production processes, WIDE collection products qualify for LEED international certification.


indicatore di flessibilità flexibility index	deflessione massima sotto carico di 350 N maximum deflection under load of 350 N	lato/lenght 2400 mm	> 50 mm
		lato/lenght 3200 mm	> 100 mm

CARATTERISTICHE TECNICHE TECHNICAL FEATURES

CLASSIFICAZIONE SECONDO NORME UNI EN 14411 (ISO 13006) ALLEGATO G-Gruppo B1a GL
CLASSIFICATION IN ACCORDANCE WITH UNI EN 14411 (ISO 13006) ANNEX G-Group B1a GL

LASTRE IN GRES PORCELLANATO A MASSA COLORATA / FULL BODY COLORED PORCELAIN SLABS

PROPRIETÀ FISICO-CHIMICHE PHYSICAL-CHEMICAL PROPERTIES	NORMA NORM	VALORE PRESCRITTO DALLE NORME VALUE PRESCRIBED FROM THE NORMS	VALORE ABK ABK VALUE INTERNO 9 NAT.
LUNGHEZZA E LARGHEZZA DIMENSIONE MEDIA DI OGNI PIASTRELLA LENGTH AND WIDTH OF THE AVERAGE-SIZES TILE	UNI EN ISO 10545/2	± 0,5%	CONFORME ACCORDING
SPESSORE THICKNESS	UNI EN ISO 10545/2	± 5%	CONFORME ACCORDING
RETTILINEARITÀ SPIGOLI WARPAGES OF EDGES	UNI EN ISO 10545/2	± 0,5%	CONFORME ACCORDING
ORTOGONALITÀ WEDGING	UNI EN ISO 10545/2	± 0,6%	CONFORME ACCORDING
PLANARITÀ FLATNESS	UNI EN ISO 10545/2	± 0,5%	CONFORME ACCORDING
ASSORBIMENTO D'ACQUA WATER ABSORPTION	UNI EN ISO 10545/3	E ≤ 0,5%	CONFORME ACCORDING
RESISTENZA ALLA FLESSIONE BENDING STRENGTH	UNI EN ISO 10545/4	≥ 35 N/mm ²	CONFORME ACCORDING
FORZA DI ROTTURA BREAKING STRENGTH	UNI EN ISO 10545/4	≥ 1300 N	CONFORME ACCORDING
RESISTENZA ALL'ABRASIONE SUPERFICIALE PER PIASTRELLE SMALTATE ABRASION RESISTANCE FOR GLAZED TILES	UNI EN ISO 10545/6	IN FUNZIONE ALLA DESTINAZIONE D'USO ACCORDING TO THE DESTINATION OF FINAL USE	CONFORME ACCORDING
RESISTENZA AGLI SBALZI TERMICI THERMAL SHOCK RESISTANCE	UNI EN ISO 10545/9	RICHIESTA REQUIRED	RESISTE RESISTS
RESISTENZA AL GELO FROST RESISTANCE	UNI EN ISO 10545/12	RICHIESTA REQUIRED	INGELIVO FROST PROOF
RESISTENZA ALL'ATTACCO CHIMICO CHEMICAL RESISTANCE	UNI EN ISO 10545/13	-	RESISTE RESISTS
RESISTENZA ALLE MACCHIE RESISTANCE TO STAINING	UNI EN ISO 10545/14	GL ≥ MINIMO CLASSE 3	RESISTE RESISTS
RESISTENZA ALLO SCIVOLAMENTO SLIP RESISTANCE	B. C. R. A. C. A.	μ 0,19 SCIVOLOSITÀ PERICOLOSA - DANGEROUSLY SLIPPERY 0,20 < μ < 0,39 SCIVOLOSITÀ ECCESSIVA - EXCESSIVELY SLIPPERY 0,40 < μ < 0,74 ATTRITO SODDISFACENTE - SATISFACTORY GRIP μ 0,75 ATTRITO ECCELLENTE - EXCELLENT GRIP	> 0,40
	B. C. R. A. G. B.		> 0,40
	ASTM C 1028 (S.C.O.F.)	SLIP RESISTANT (> 0,60)	> 0,60 DRY > 0,60 WET
	DIN 51130	IN FUNZIONE DELL'AMBIENTE O DELLA ZONA DI LAVORO BASING ON THE ENVIRONMENT OR THE WORKING AREA	R10
	DIN 51097	-	A+B
	ANSI A 137-1:2012	≥ 0,42	> 0,42

VARIAZIONE CROMATICA SHADE VARIATION	V3	 aspetto uniforme uniform appearance V1	 lieve variazione slight variation V2	 moderata variazione moderate variation V3	 forte variazione substantial variation V4
---	----	--	--	--	---

ABK

Brand of ABK Group Industrie Ceramiche s.p.a.
via S.Lorenzo N.24/a - 41034 Finale Emilia - Modena Italy
tel. 0535 761311 - fax 0535 761320/92800/761351
www.abk.it - #abkemozioni



20.3

La riproduzione dei colori è approssimativa. - Colour reproduction approximate.



ABK

EMOZIONI IN SUPERFICIE